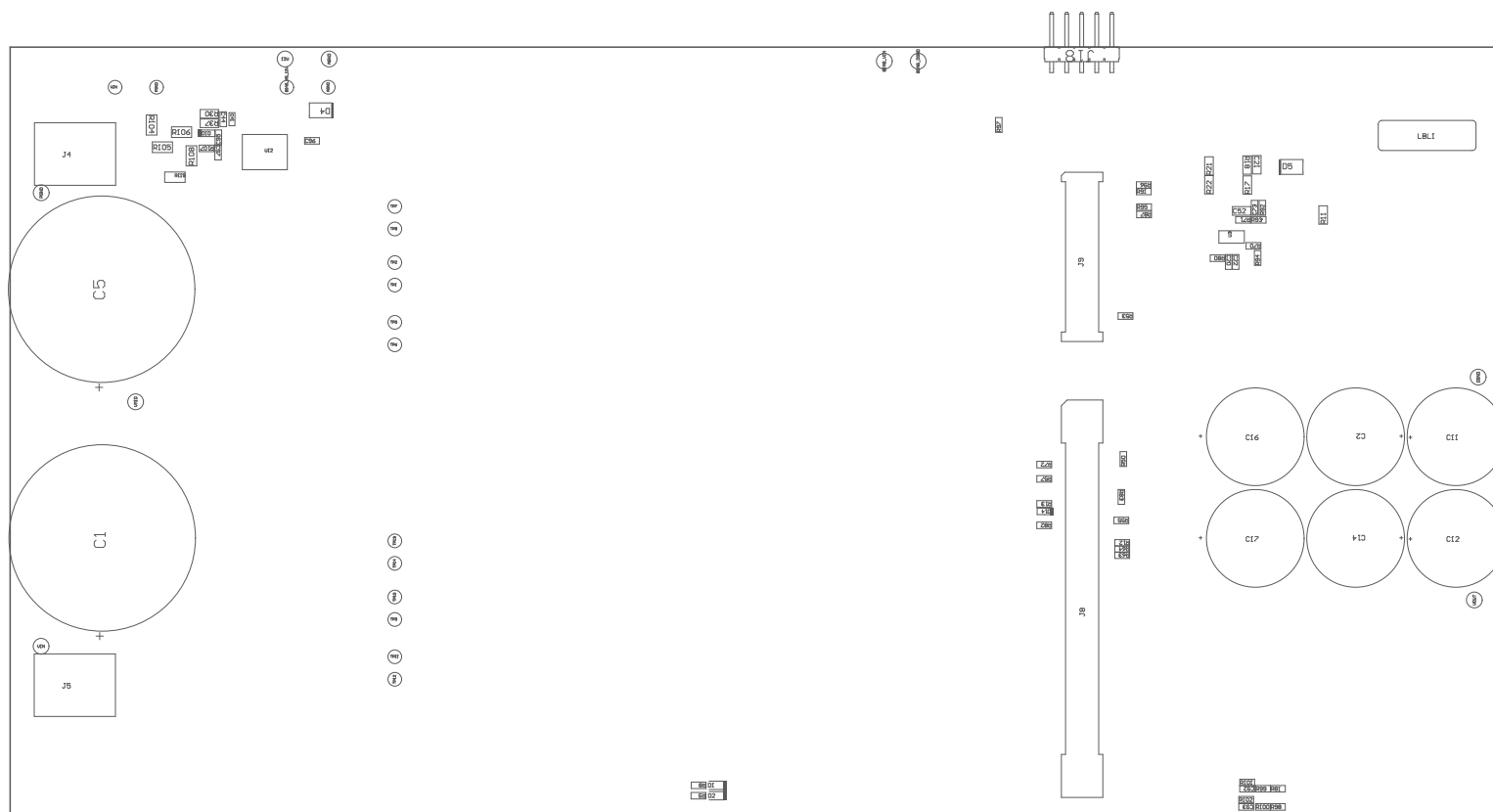


- 221 ■ Install label in silkscreened box after final wash. Text shall be 8 pt font. Text shall be per the Label Table in the PDF schematic.
- 222 ■ These assemblies are ESD sensitive, ESD precautions shall be observed.
- 223 ■ These assemblies must be clean and free from flux and all contaminants. Use of no clean flux is not acceptable.
- 224 ■ These assemblies must comply with workmanship standards IPC-A-610 Class 2, unless otherwise specified.



COMPONENTS MARKED 'DNP' SHOULD NOT BE POPULATED.

ASSEMBLY VARIANT:

PMP41139 SHB version

FILE NUMBER FROM TEST DATE	BOARD #	WATER QUAL	REV.	A	DATE/REV	NOT IN WATER LISTING
	FILE #	PROJECT				
FILE NAME *	The Associated Company		GENERATED :	2/13/2025	10:50:41 AM	TRANSMITTED/REVISED

